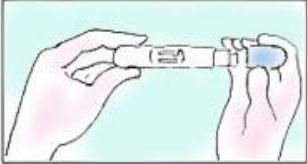
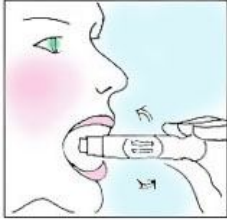
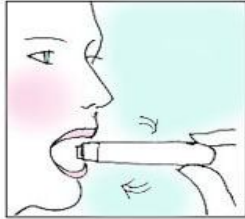
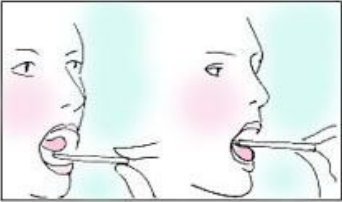
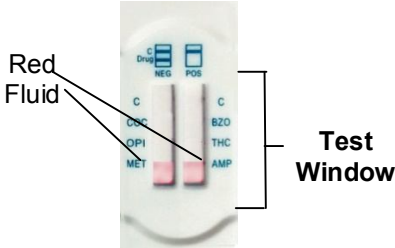



Orawell® Oral Fluid Drug Screen Device Package Insert

The Orawell® Oral Fluid Drug Screen Device is a simple one-step test for the detection of drugs of abuse in oral fluid.

<p>1. Remove the blue cap by pulling the both sides gently. This will expose the collection pad.</p> 	<p>2. Gently rub the collection pad inside mouth against cheek in a circular motion several (approximately 10-15) times.</p> 	<p>3. Gently rub the collection pad against the opposite cheek in circular motion several (approximately 10-15) times.</p> 
<p>4. Gently rub the collection pad on top of the tongue and underneath of the tongue several (approximately 10-15) times. Do not chew, suck, bite or bend the collection pad.</p> 	<p>5. Place the collection pad underneath the tongue for approximately 30 seconds to collect saliva. Instruct the donor to hold the device in place with hand. When sufficient amount of saliva is collected, the red fluid will move up to the window.</p> 	<p>6. Remove from mouth after red fluid shows up in both of the test windows. Re-cap the device and lay on a flat surface. Start timer and read results in 5 minutes.</p> 

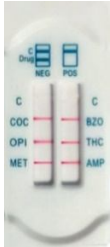
Interpreting Test Results

Orawell® Oral Fluid Drug Screen Device Package Insert

Invalid Result

When **no** colored band appears in the **CONTROL (C) region**, the test is **invalid** even if there is a band in the test region. **Repeat** the test with a new device.

Example Interpretation:



COC:	Invalid
OPI:	Invalid
MET:	Invalid
BZO:	Invalid
THC:	Invalid
AMP:	Invalid

Negative Result

For each test, two colored bands should be observed:

- **One in the CONTROL (C) region**
- **One in the specific TEST region**

The color of the test band may be slightly darker or lighter than the control band. Any visible band that can be seen is a **negative** result.

Example Interpretation:



COC:	Negative
OPI:	Negative
MET:	Negative
BZO:	Negative
THC:	Negative
AMP:	Negative

Presumptive Positive Result

A colored band at the **CONTROL (C) region** should be observed. When there is no colored band at the specific **TEST region**, the test is presumptive positive for that particular drug.

Example Interpretation:



COC	Negative
OPI:	Negative
MET:	Presumptive Positive
BZO:	Negative
THC:	Negative
AMP:	Negative

